



Features

- Indoor use
- High power efficiency > 80%
- High luminous efficiency LEDs
- No UV or IR radiation
- Cool light minimizes rise in ambient temperature
- Energy saving and environmentally friendly
- Slim, compact and fashionable design
- CE and FCC certifications
- Bundled driver with active PFC and OTP/OVP/SCP functions



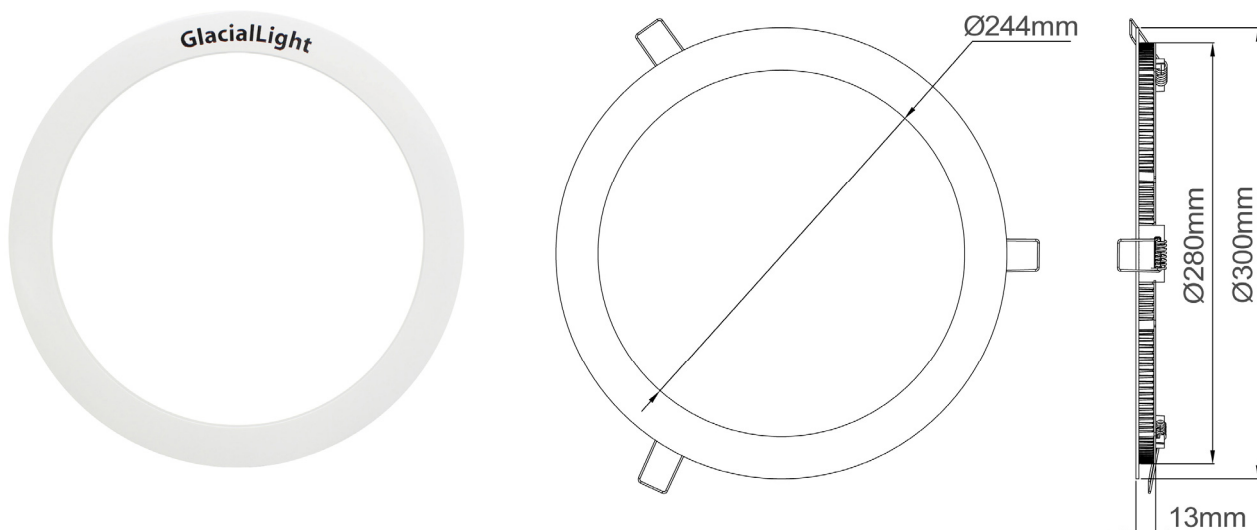
Specifications

Type	GL-DL10-WW	GL-DL10-NW	GL-DL10-CW
Energy Used	25W		
Rated Life	30,000 Hours		
Input Voltage	100-240V AC		
Power Factor (PF)	0.98@120V AC, 0.9@240V AC		
CCT (color)	3000K	4000K	5700K
Luminous Flux	1750lm	1850lm	1950lm
Luminous Efficacy	70lm/W	74lm/W	78lm/W
CRI (Typ.)	80	80	80
Beam Angle	120°		
Dimension	Φ 300 x 13mm		
Operation Temperature	-20°C ~ +40°C		
IP Rating	IP20		
Net Weight	1kg (with driver)		
Package	10 PCS / Carton		
Bundled Driver	GP-HS25P-36C		

Bundled Driver Specifications

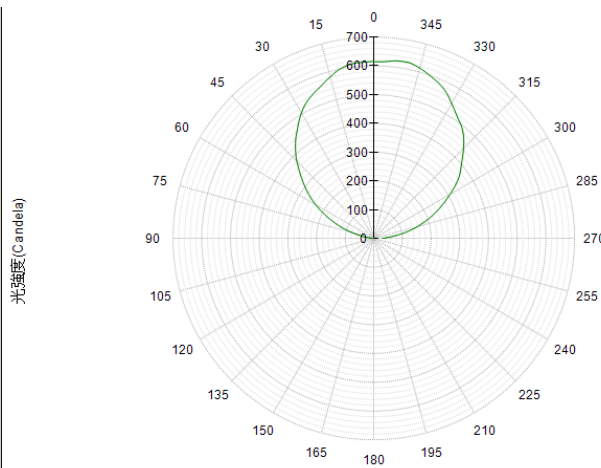
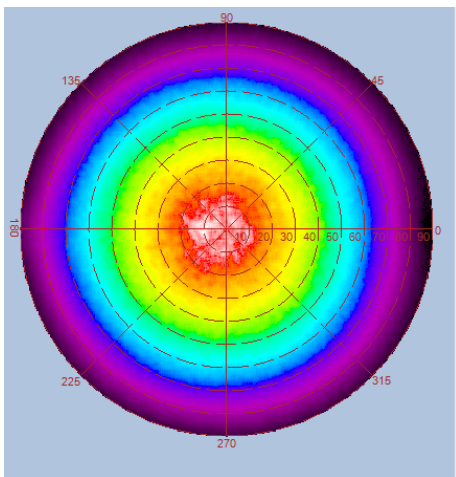
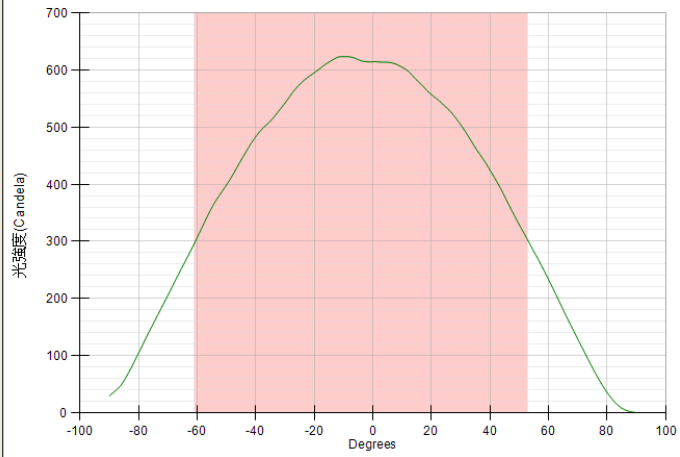
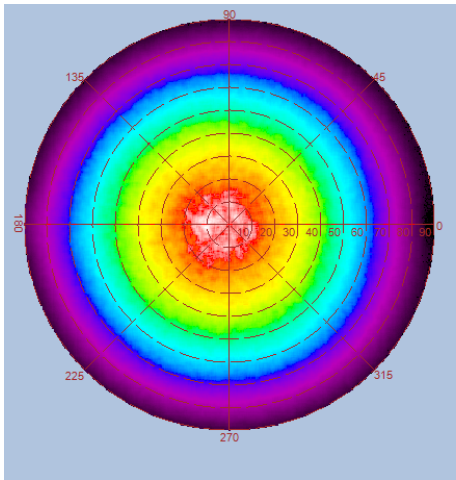
Input	Output
100-240V AC	Constant Current 700mA, DC Voltage >25V

Outline / Dimension

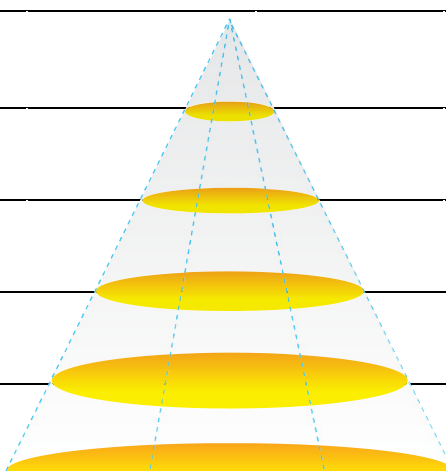


Luminous Intensity Distribution Diagram

GL-DL10-WW/ CCT: 3000K

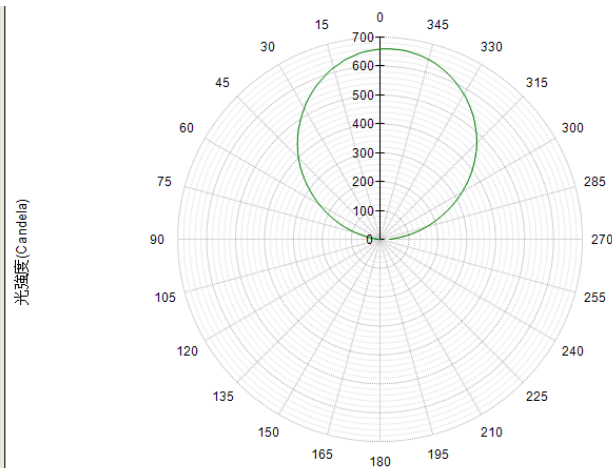
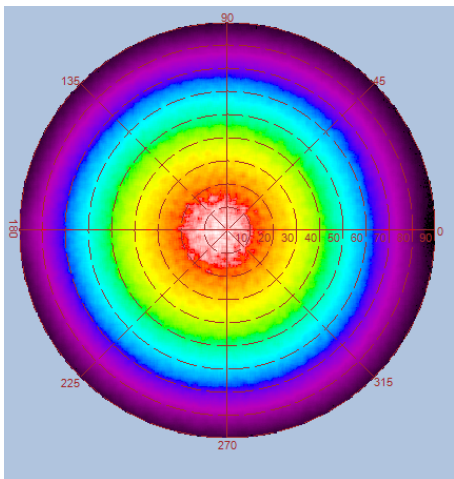
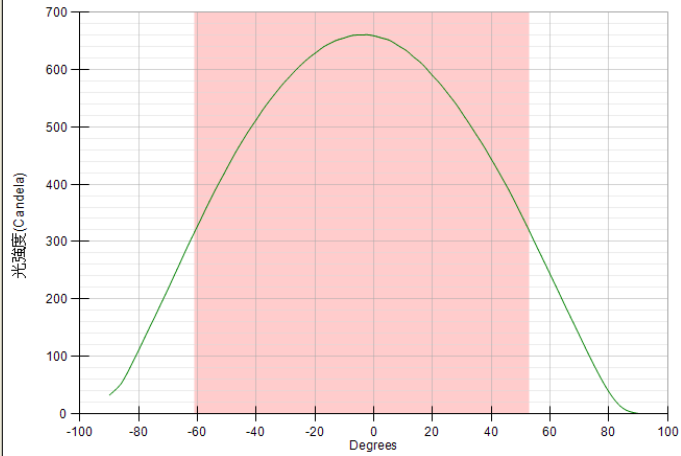
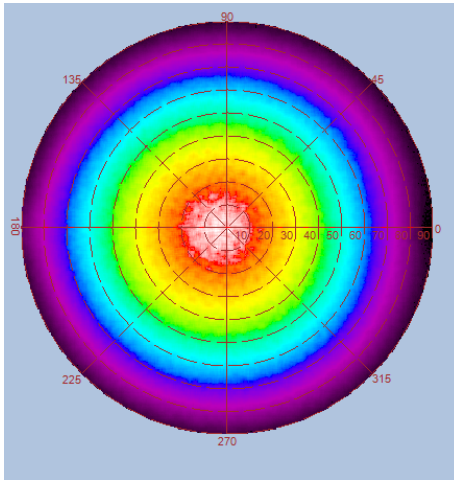


Height	E Max.	Diameter
1.0M	665 Lx	308.0cm
2.0M	166 Lx	616.0cm
3.0M	74 Lx	924.0cm
4.0M	42 Lx	1232.0cm
5.0M	27 Lx	1540.0cm

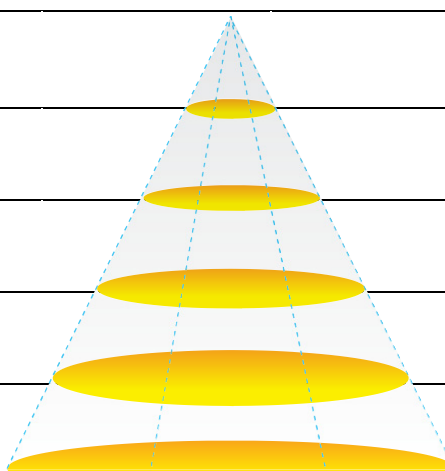


Luminous Intensity Distribution Diagram

GL-DL10-NW/ CCT: 4000K

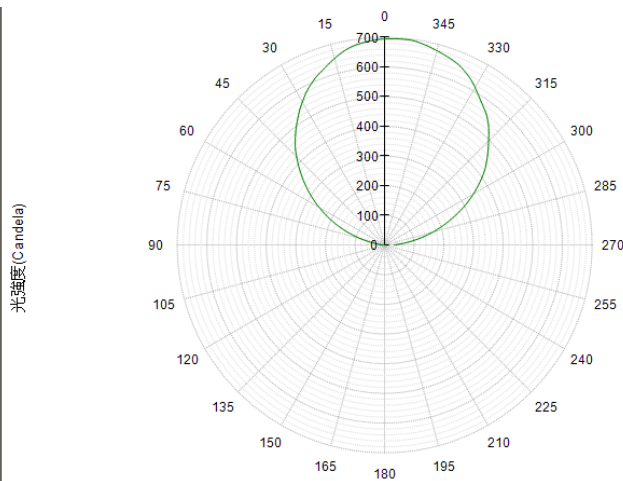
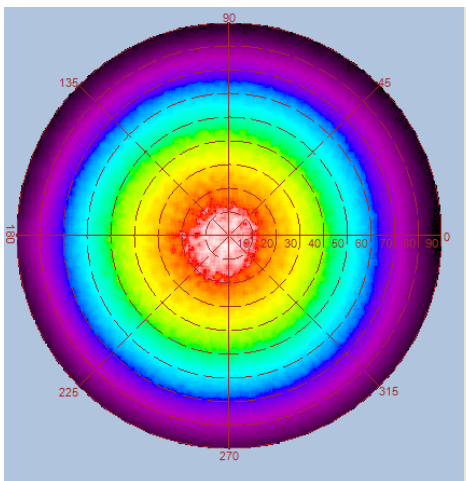
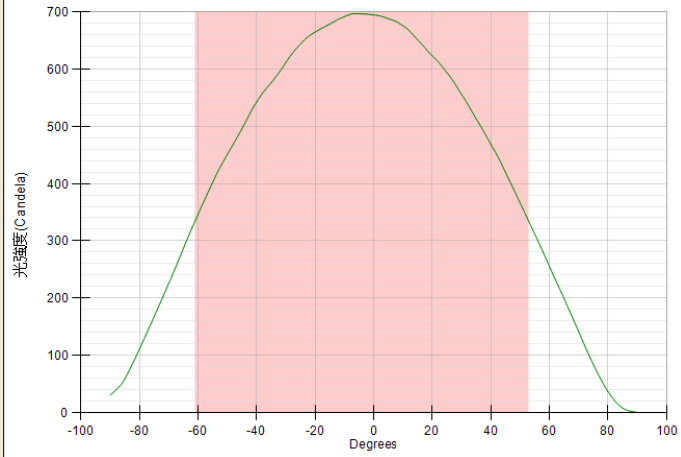
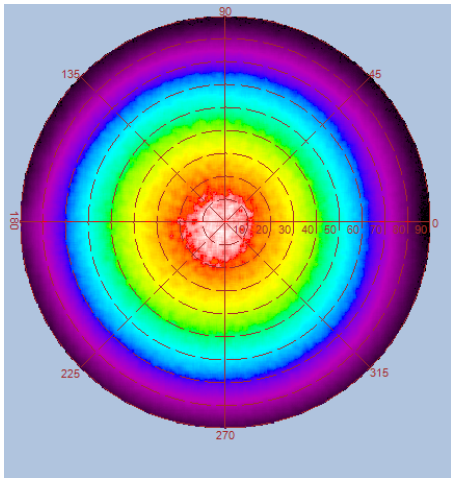


Height	E Max.	Diameter
1.0M	705 Lx	308.0cm
2.0M	176 Lx	616.0cm
3.0M	78 Lx	924.0cm
4.0M	44 Lx	1232.0cm
5.0M	28 Lx	1540.0cm



Luminous Intensity Distribution Diagram

GL-DL10-CW/ CCT: 5700K



Height	E Max.	Diameter
1.0M	761 Lx	308.0cm
2.0M	190 Lx	616.0cm
3.0M	85 Lx	924.0cm
4.0M	48 Lx	1232.0cm
5.0M	31 Lx	1540.0cm

